

SONALIKA
LEADING AGRI EVOLUTION



HEAVY DUTY TRACTOR

39 ki Taqat, Mileage aur Speed Bemisaal

King of Fields

Unmatched Power:
Can operate 0.33 M
Bigger Rotavator (in category)

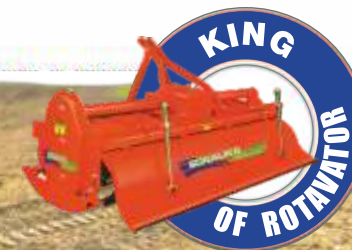
Highest Backup Torque:
(28.9%)

Champion on Roads

Maximum Speed:
Best in category: 32.71 km/h

Easy lifting of trolley with company fitted DCV (Trolley Pressure Pipe)

Optimum Balance : Zero front end lifting.



WORLD'S NO. 1

HEAVY DUTY TRACTOR RANGE

For more information please contact :
TOLL FREE NO. 1800 102 1011

www.sonalika.com

DI 35 HEAVY DUTY TRACTOR

DI 35 - 39 ki Taqat, Mileage aur Speed Bemisaal

POWERFUL ENGINE (2780 CC DISPLACEMENT)

Best power availability for farming & haulage.

HIGHEST BACKUP TORQUE (28.9%)

Negligible RPM drop even on sudden heavy load- Best in diesel saving.

KING OF ROTAVATOR

Best coverage by **0.33 M** bigger Rotavator.

UNMATCHED SPEED (32.71 kmph)

Per hour best coverage in field and more haulage trips.

HEAVY DUTY PARTS

Heavy Duty design of parts for longer life & best return on investment.

BALANCED & COMPLETE

No tyre slippage and front end lifting.

ZA POWER SONALIKA Hallmark of HEAVY DUTY

Zero acceleration power test proves that Sonalika is more powerful than other tractors.

It can pull cultivator, immersed in soil along with the load of 3-4 persons on minimum RPM (600-700) & L1 gear combination.

This unmatched performance is due to optimum design combination of Heavy Duty Backup Torque, Heavy Duty Parts, Powerful Engine & Heavy Duty Gear Box.

“Truly, a HEAVY DUTY Tractor !”

Product improvement is a continue process at ITL, above specification may change without pre-information.

Contact nearest dealer for latest updates.

Accessories shown are not part of standard product.

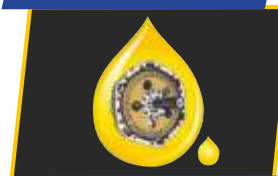
*Product performance claims are under standard conditions.

LEQD35X10321

DI 35 Technical Specification

Model	SONALIKA INTERNATIONAL DI-35 DS-CM PLUS
	SONALIKA INTERNATIONAL DI-35 SM PLUS
Drive	2WD
Engine	4 Stroke, Direct Injection, Water Cooled, Diesel Engine
No of Cylinder/ Displacement	3/2780cc
H.P. Category	39
Rated Engine Speed	2000
Transmission Type	Constant Mesh (optional sliding mesh)/ 8+2
PTO	540
Clutch Type	Single/Dual
Brakes	Dry Disc/OIB
Steering Type	Mechanical/Power
Lifting Capacity	1200/1600 kg
Wheel Base	1970 mm
Front Tyre	152.4mm - 406.4mm (6.0-16)
Rear Tyre	314.96mm - 711.2mm (12.4-28) / 345.44mm - 711.2mm (13.6-28)

OIB



Less Maintenance, Longer Life

DCV



Easy lifting of trolley with company fitted DCV (Trolley Pressure Pipe)

POWER STEERING



Best maneuverability with low effort, comfortable operation

DUAL CLUTCH



Useful in operating Thresher & Post Hole Digger

REVERSE PTO



Easier operation of PTO operated implements like Rotavator etc.

INTERNATIONAL TRACTORS LIMITED

C-133A, Sector-2, Noida- 201301 (U.P.)

Ph. : +91 120 4095860

Fax : +91 11 22377472, 22370492

TOLL FREE NO. 1800 102 1011

Website : www.sonalika.com