

SONALIKA
LEADING AGRI EVOLUTION

DI730 II

HEAVY DUTY TRACTOR

2 ke Daam Me 3 ka Kaam



King of Fields

Unmatched Power:
Can operate 0.33 M
Bigger Rotavator (in category)

Highest Backup Torque:
(24.18%)

Champion on Roads

Maximum Speed:
Best in category: 33.18 km/h

Easy lifting of trolley with company
fitted DCV (Trolley Pressure Pipe)

Optimum Balance : Zero front end lifting.



WORLD'S NO. 1 PLANT MEIN NIRMIT
HEAVY DUTY TRACTOR RANGE

For more information please contact :
TOLL FREE NO. 1800 102 1011

www.sonalika.com

DI 730 II HEAVY DUTY TRACTOR

DI 730 II - 2 ke Daam Me 3 ka Kaam

POWERFUL ENGINE (2044 CC DISPLACEMENT)

Best power availability for farming & haulage.

HIGHEST BACKUP TORQUE (24.18%)

Negligible RPM drop even on sudden heavy load- Best in diesel saving.

KING OF ROTAVATOR

Best coverage by **0.33 M** bigger Rotavator.

UNMATCHED SPEED (33.18 kmph)

Per hour best coverage in field and more haulage trips.

HEAVY DUTY PARTS

Heavy Duty design of parts for longer life & best return on investment.

BALANCED & COMPLETE

No tyre slippage and front end lifting.

ZA POWER SONALIKA Hallmark of HEAVY DUTY

Zero acceleration power test proves that Sonalika is more powerful than other tractors.

It can pull cultivator, immersed in soil along with the load of 3-4 persons on minimum RPM (600-700) & L1 gear combination.

This unmatched performance is due to optimum design combination of Heavy Duty Backup Torque, Heavy Duty Parts, Powerful Engine & Heavy Duty Gear Box.

“Truly, a HEAVY DUTY Tractor !”

Product improvement is a continue process at ITL, above specification may change without pre-information.

Contact nearest dealer for latest updates.

Accessories shown are not part of standard product.

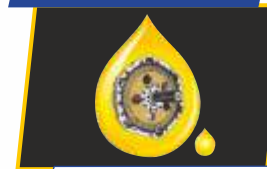
*Product performance, claim are under standard conditions.

LEQD730IIX20723

DI 730 II Technical Specification

Model	DI-730 II HDM
Drive	2WD
Engine	4 Stroke, Direct Injection, Water Cooled, Diesel Engine
No of Cylinder/ Displacement	2 / 2044 cc
H.P. Category	30
Rated Engine Speed	1800
Transmission Type	Sliding Mesh 8+2
Speed km/per h	2.05 to 33.18
PTO	540
Clutch Type	Single
Brakes	Dry Disc/OIB
Steering Type	Mechanical
Lifting Capacity	1200 kg
Wheel Base	1835 mm
Front Tyre	152.4mm - 406.4mm (6.0-16)
Rear Tyre	314.96mm - 711.2mm (12.4-28)

OIB



Less Maintenance, Longer Life

COOLANT RECOVERY BOTTLE



Zero coolant wastage & best cooling operation

TIPPING TRAILER CONNECTION



Easy to operate Trolley

HEAVY DUTY BUMPER



Tractor never lifts from the front

INTERNATIONAL TRACTORS LIMITED

C-133A, Sector-2, Noida- 201301 (U.P.)

Ph. : +91 120 4095860

Fax : +91 11 22377472, 22370492

TOLL FREE NO. 1800 102 1011

Website : www.sonalika.com