



TIGER SPECIFICATIONS		
MODEL	GT - 30	DI - 26 GARDENTRAC S 1
Engine		
Capacity (CC)	1318	1318
HP Category	30	26
No. of Cylinders	3	3
Rated E RPM	3000	2700
Air Cleaner Type	Dry	Dry
Transmission		
Shift type	Side Shift*	Side Shift*
Clutch Type	Single	Single
No. of Speeds - Standard	12F + 4R	12F + 4R
PTO Type	4 Speed PTO	4 Speed PTO
Brakes	Multi Disc OIB	Multi Disc OIB
Hydraulics		
Steering Type	Hydrostatic	Hydrostatic
Lift Capacity,kg	750	750
Hydraulic Control Valve	1SA	1SA
Tyre		
Tyre Size Front	152.4mm - 304.8mm (6.0-12)	152.4mm - 304.8mm (6.0-12)
Tyre Size Rear	210.82mm - 508mm (8.3-20) Opt - 210.82mm - 508mm (8.3-24*)	210.82mm - 508mm (8.3-20) Opt - 210.82mm - 508mm (8.3-24*)

WORLD'S NO. 1

HEAVY DUTY TRACTOR RANGE

Since product improvement is a continuous process, specification and details provided are subject to change without prior notice. Please correlate with latest updates, accessories shown may not be part of standard product. E&OE.

International Tractors Limited

Head Office & Plant: Village Chak Gujran, P.O. Piplanwala- 146022, Jalandhar Road, Hoshiarpur (Pb.) - INDIA | Phone: +91-1882-522220, 522221 | Fax: +91-1882-522222

Marketing Office: C-133 A, Sector-2, Noida (UP) - 201301 | Phone: +91-120-4095860

www.sonalika.com | https://twitter.com/Sonalika_India | https://www.facebook.com/SonalikaTractorsOfficial | http://www.youtube.com/sonalikatractorsindia



WORLD'S NO. 1
HEAVY DUTY TRACTOR RANGE

Toll Free No. - **1800 102 1011**
www.sonalika.com





Specialized for Vineyards & orchards

- Seat height of 900 mm suitable for MANDAP & Y - type vineyards
- 4 Speed PTO options delivers best power & fuel efficiency
- 7 Gear speeds in 2.8 -10 kmph range to perfectly match all type of sprayers



Multi application usage

- Precise hydraulic – smooth controlled slip operation
- Choice of 7 gear speeds to optimize productivity with fuel efficiency
- Best in class road speed

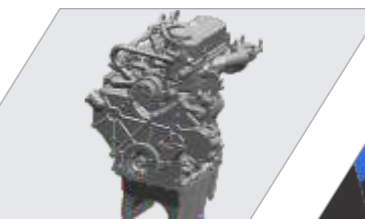
TECHNOLOGICALLY ADVANCED FEATURES



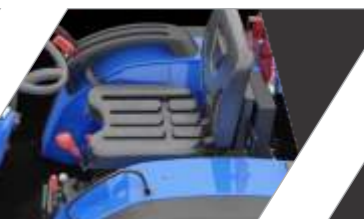
Ergo Power Steering - Ease in Operation



12+4 Side Shift Transmission-Easy To Operate More Speeds Ensures Versatility And Higher Productivity



Powerful Engine 1318 Cc. Torque 81 Nm



Next Generation Seat Seat Height Of 900mm Suitable For All Vineyards



Digital Instrument Cluster - Aids Overnight Operations



Two Lever Control - Independent Control Of Stick Draft Setting



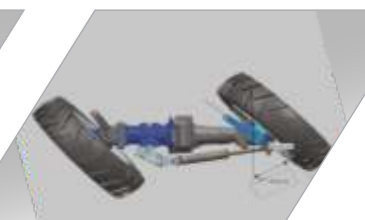
4 Speed PTO - Delivers Best Power & Fuel Efficiency



Stylish Head Lamp - Attractive & better visibility at night



Modern Styling - New attractive design



4wd Heavy Duty Sealed Axle With Bevel Gears

TIGER SPECIFICATIONS

MODEL	GT - 30	JD 3028	VST 270		
Engine HP Category	30	28	27		
Torque (Nm)	81	87	51.2		
Pto power (HP)	25	22.1	20.66		
Max speed (km/h)	22.06	19.5	19.9		
MODEL	DI - 26 GARDENTRAC S 1	Kubota B 2741	Escort-26 ATOM	Massey 6028	PT EURO G28
Torque (Nm)	81	64.9	67.6	64.9	80.5
Pto power (HP)	22	19.02	21.17	20.5	21.65
Max speed (km/h)	28.02	18.72	22.42	16.96	25.5

BEST IN CLASS